

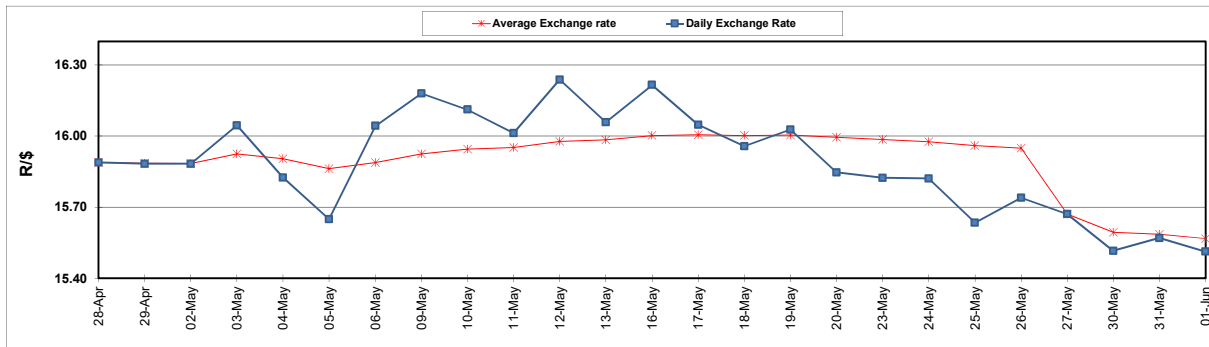
| | PETROL 95 ULP | PETROL 93 ULP & LRP | DIESEL 0.05% | DIESEL 0.005% | ILL. PAR. |
|--|------------------|------------------------|-----------------|------------------|-----------|
| GAUTENG PUMP PRICE (SA c/l) AS FROM 01/06/2022 | 2,417.000 | 2,394.000 | - | - | - |
| WHOLESALE PRICE (SA c/l) AS FROM 01/06/2022 | - | - | 2,309.440 | 2,322.840 | 1,820.288 |
| SINGLE NATIONAL MAXIMUM RETAIL PRICE | - | - | - | - | 2,402.000 |
| BASIC FUEL PRICE - 01/06/2022 (SA c/l) | 1,642.172 | 1,604.880 | 1,673.962 | 1,687.012 | 1,675.362 |
| PRESS RELEASE CONTRIBUTION TO BFP 01/06/2022 - 01/06/2022 (SA c/l) | 1,507.410 | 1,484.410 | 1,607.630 | 1,621.030 | 1,602.128 |
| UNIT OVER/(UNDER) RECOVERY - 01/06/2022 (SA c/l) | (134.762) | (120.470) | (66.332) | (65.982) | (73.234) |
| AVERAGE BASIC FUEL PRICE 27/05/2022 - 01/06/2022 | 1,634.858 | 1,588.024 | 1,620.378 | 1,633.582 | 1,634.627 |
| AVERAGE UNIT OVER/(UNDER) RECOVERY 27/05/2022 - 01/06/2022 | (309.698) | (285.864) | (95.248) | (92.802) | (149.499) |

ANALYSIS MOVEMENT OF AVERAGE OVER/(UNDER) RECOVERY

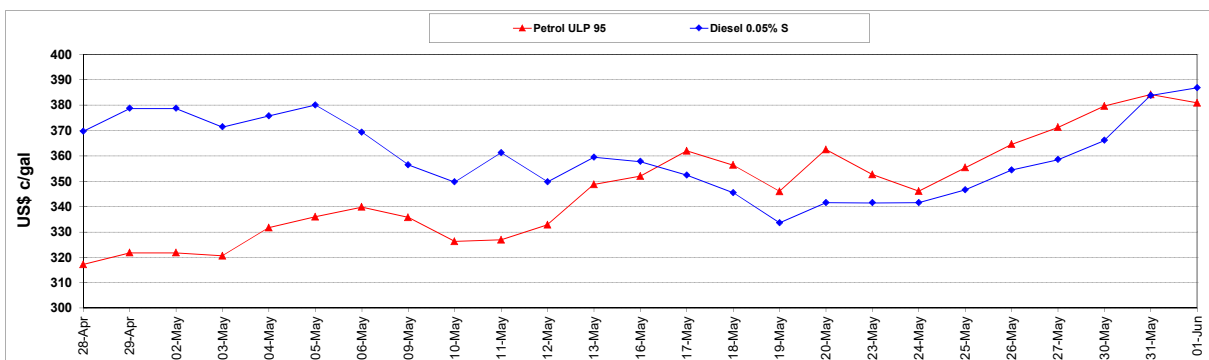
| | PETROL 95 | PETROL 93 | DIESEL 0.05% | DIESEL 0.005% | ILL. PAR. |
|--|-----------|-----------|--------------|---------------|-----------|
| - MOVEMENT IN INTERNATIONAL PRODUCT PRICES | (349.773) | (324.791) | (134.968) | (132.845) | (189.568) |
| - MOVEMENT IN EXCHANGE RATE | 40.075 | 38.927 | 39.720 | 40.043 | 40.069 |
| AVERAGE UNIT OVER/(UNDER) RECOVERY 27/05/2022 - 01/06/2022 | (309.698) | (285.864) | (95.248) | (92.802) | (149.499) |

R/\$ EXCHANGE RATE - (R/\$15.5125 - 01/06/2022)

EXCHANGE RATE USED IN BASIC FUEL PRICE



INTERNATIONAL PRODUCT PRICES OF BASKET USED IN BASIC FUEL PRICE



BASIC FUEL PRICE IN SA CENTS PER LITRE

